



PREPARED FOR:
Sales & Information

PREPARED BY:
Preconsu
Year:2024

Company Profile
PCES N.V.
Preconsu Construction and
Environmental Services N.V.





About US

PCES N.V.

Preconsu Construction and Environmental Services N.V.

Preconsu Foundation

Preconsu will execute its products and services in a socially responsible manner. We will create new services for market segments to reduce the negative environmental impact of businesses, such as promoting the reuse of waste materials, optimizing logistics, operational processes, and developing green products. Furthermore, we are committed to establishing prefab homes and offices with renewable energy.

Preconsu Foundation is a Green investment foundation.

We are a socially responsible organization dedicated to reducing the negative environmental impact of businesses as well as our own products and services. Our primary focus is on SDG13, Climate Action, and we specialize as Carbon Offset Project Developers.

PCES N.V., we have intentionally chosen to leverage our experience in manufacturing

prefab houses, offices and workspaces and apply it to diverse sectors and a broader range of applications. Our comprehensive knowledge of materials, construction-methods and finishing possibility, make us a flexible partner for anyone seeking a high- quality prefab constructions.





MISSION & VISION

Mission:

The construction of modern and affordable prefab buildings using sustainable technical building elements, equipped with renewable energy.

Vision:

We place great importance on the personal growth of our employees and the sustainability of both businesses and our services. Creating awareness among our clients about how they can be environmentally friendly and successful through sustainable investments.

Customer Appreciation

Satisfaction is strongly influenced by the expectations and appreciation of the customer. Therefore, customer satisfaction, customer expectations, and customer appreciation are central to Preconsu Foundation.

We pay extra attention to our customers.

Our goal is to help people, save the planet, and create a better future."



ABOUT US



www.preconsunv.com



Company Information

Company Name: PCES N.V.

Foundation: Preconsu

Address: Jaggernath Lachmonstraat #30 and 62

Phone Numbers: (+597) 8226970

(+597) 7135691



Director and project manager Vanessa Souda



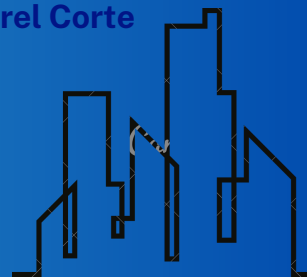
Senior Construction officer Jermain Lienga



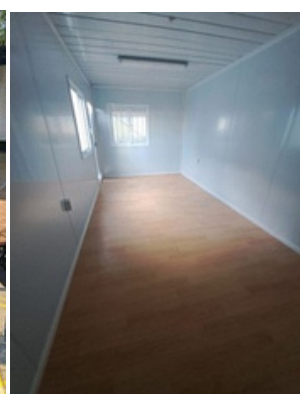
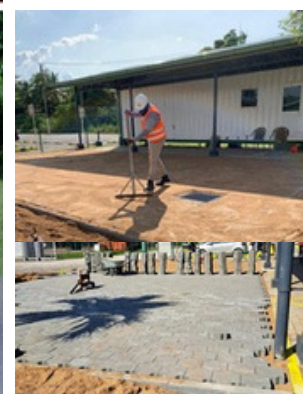
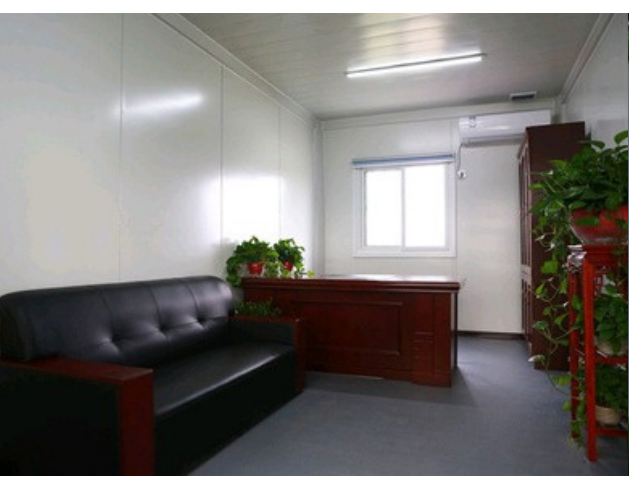
Director Rogier Mahangi



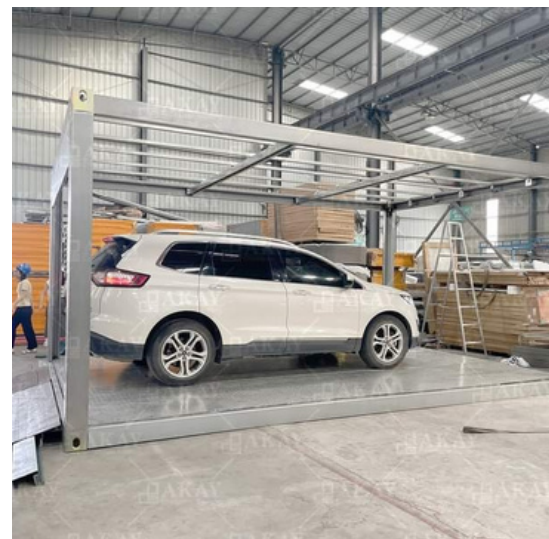
Finance coördinator Parel Corte



Our Company Projects



Our Company Projects



Our Company Projects



**Reference: Staatsolie NV, Private sector
,woodensector, IDB projects,
government projects**



Preconsu Foundation services

Your partner in Suriname from A to Net Zero

Our easy-to-use tools make climate action even more accessible for businesses and individuals.

Environment & Circularity

Via innovative ICT applications and consulting services to support environmental performance and decision-making for environment awareness and protection from environmental disasters.

Preconsu Emissie Tool

Deze CO2 monitoring tool is gebouwd voor Preconsu. Surinaamse bedrijven kunnen hiermee een schatting maken van hun CO2 equivalente uitstoot, en daarmee hun footprint. Om deze schatting te krijgen wordt het Greenhouse Gas Protocol scope 1 en 2 gebruikt. Het bedrijf hoeft alleen zijn gegevens in te vullen en de tool doet de berekening voor hen.

Scope 1	Scope 2	Resultaten
		?

© Joris van der Meer voor Preconsu
(2023)

1. Measure

Understand where you stand today by analyzing your carbon footprint with our Co2 emission tool.

2. Take action

Set targets and implement measures to reduce your footprint, making sustainability a tangible goal

3. Support climate projects

Take responsibility for residual emission by supporting one of our quality climate action projects

4. Communicate and report

Inspire internal and external stakeholders to take action and contribute to a healthier planet for future generations

ICT Solutions for Environmental Monitoring and Reporting

Preconsu Foundation services

We offer a broad range of fair priced, high quality carbon credits for companies looking to offset (residual) emissions.

1. Project creation

A project developer develops a climate project (e.g. reforestation or renewable energy) which either avoids the emission of carbon or removes carbon from the atmosphere.



2. Validation and credit issuance

The project is validated by a third party. After validation, carbon credits will be issued. One carbon credit is the equivalent of one metric ton (1,000 kg) of carbon compensated.

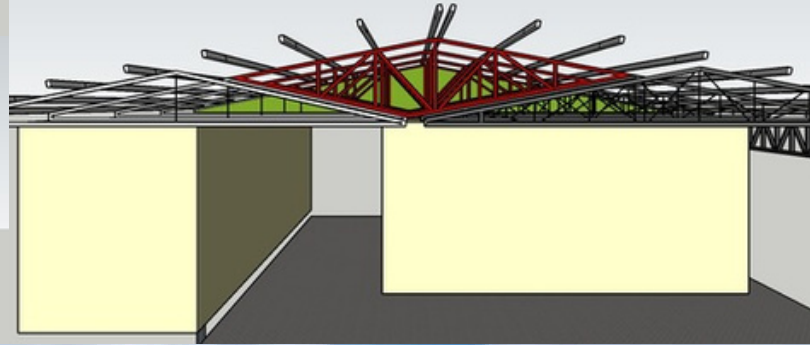
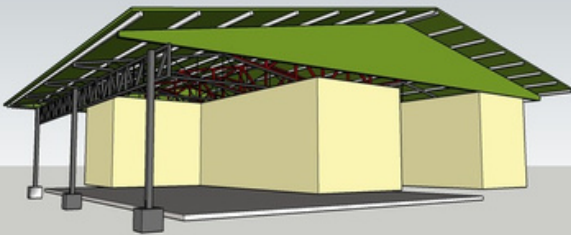
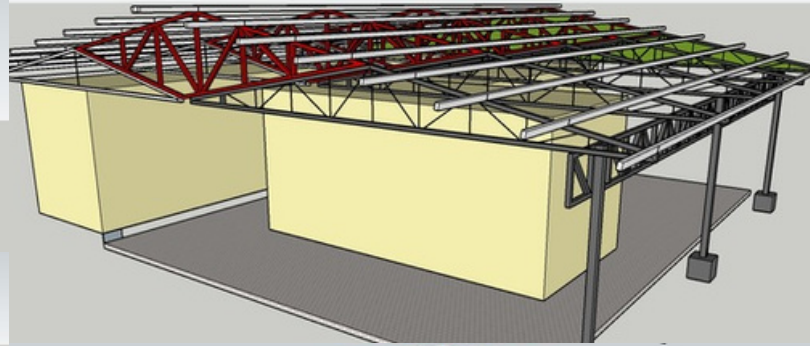
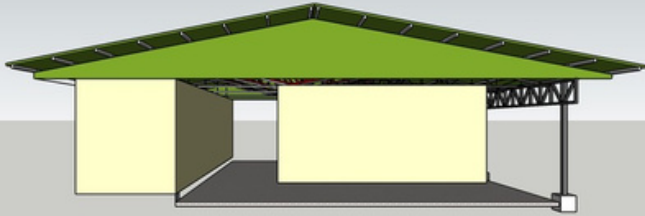


3. Businesses purchase credits

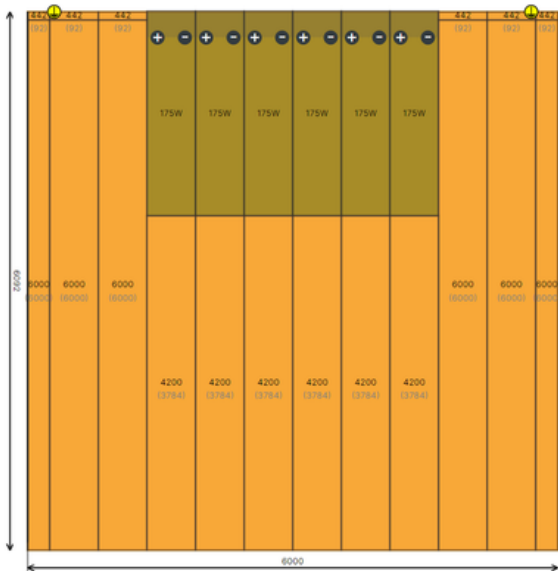
Regreening businesses purchase credits to compensate (residual) emissions. The credits will be retired, so that they can never be used more than once in order to compensate carbon.



PCES N.V. roof construction



PRECONSUS GREEN BUILDING



In 2027 we will start a modern concept for our house named: Preconsu modular panel house design with prefabricated production technology

The need to improve construction in the housing sector needs to be reviewed in the procurement of construction by utilizing the experience of the manufacturing industry to be able to increase efficiency, reduce waste, and make the industry more responsive to development needs

PCES N.V products

Decorating Your Prefab Cabin

For decorating your prefab cabin, we also provide advice. From choosing the perfect wallpaper to selecting the best lamps, we offer guidance to enhance your space.



UP

2025



4th luxury house

2022



3rd detachable house

2015



2nd container house

2012



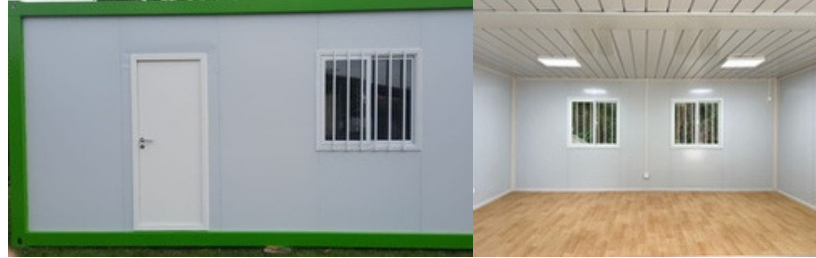
1st container house

Each upgrade brings the technology to the next level

PCES N.V. Projects and Services

- **Standard Prefab construction:**

- Dimensions: 3m width x 6m length
- (standard)
- Metal door
- Energy-efficient light bulb Electrical wiring
- Breaker box
- Power outlet
- 1 sliding window
- Price: \$6,800



- Dimensions: 3m width x 6m length
- Separate section for toilet and sink
- Steel door
- Energy-efficient light bulb
- Electrical breaker box
- 1 power outlet
- 2 sliding windows
- Includes terrace
- Flat roof construction
- Price: \$10,500



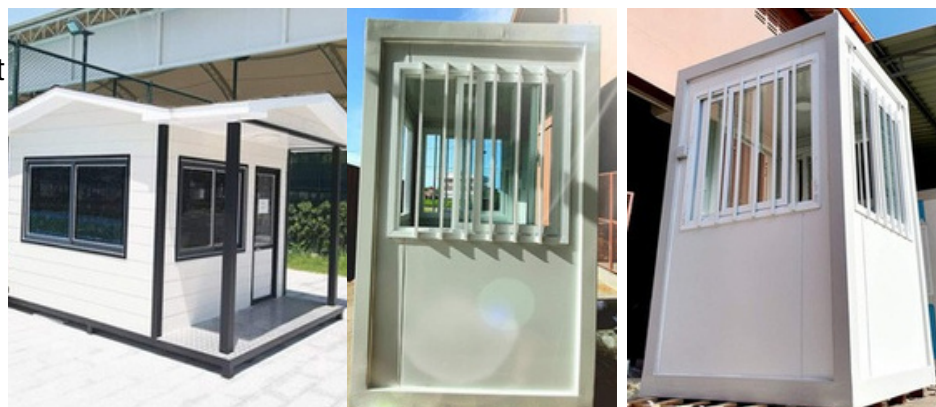
- **Work station:**

- Dimensions: 3m width x 4m L
- length Separate section for toilet and sink
- Metal door
- Energy-efficient light bulb
- (Sparlamp)
- Electrical breaker box
- 1 power outlet
- 2 sliding window:
- Price: \$7,500 (Excluding steel
- roof construction)



- **Security House:**

- imensions: 1.20m width x 1.20m lenght
- Metal door
- Energy-efficient light bulb
- (Sparlamp)
- Electrical breaker box
- 1 power outlet
- 2 sliding windows
- Price: \$4500
-



PCES n.v. Projects & Services

2 bedroom House:

Dimensions: 6m width x 6m length

- 2 bedrooms
- Separate section for toilet and sink
- 3 Metal doors
- Energy-efficient light bulb (Spaarlamp)
- Electrical breaker box
- 1 power outlet
- 3 sliding windows
- Flat roof construction
- Includes terrace
- Price: **USD 25,193.48** (Ask for the updated price)



Contractors House:

Dimensions: 3m width x 6m length each

Separate section for toilet and sink

Metal door

Energy-efficient light bulb

Electrical breaker box

1 power outlet

3 sliding windows

Steel roof construction

Floor tiling not included

(Excluded)

- Price for 2 cabins: **\$22,000** (Ask for the updated price)



3 Bedroom House:

Dimensions: 9m width x 6m length

3 bedrooms

Separate section for toilet and sink

4 Metal doors

Energy-efficient light bulb (Spaarlamp)

Electrical breaker box

1 power outlet

5 sliding windows

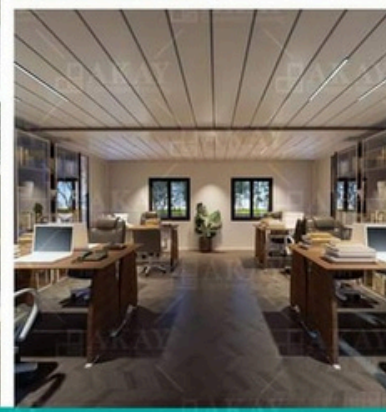
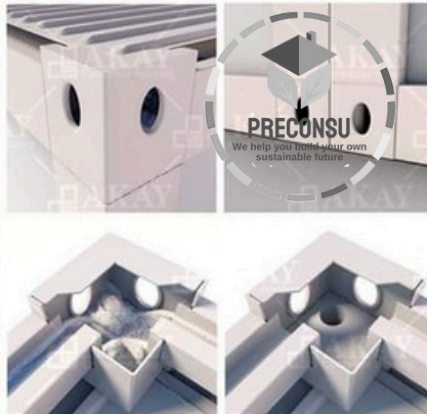
Flat roof construction

Includes terrace

Price: **USD 34,229.58** (Ask for the updated price)



Professional container buildings



Awards, certification and partnerships



ClimateLaunchpad

Supported by:

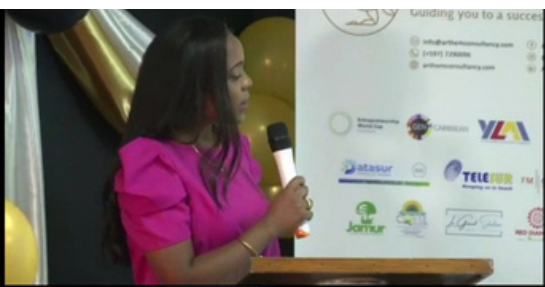


Co-funded by the European Union



ClimateLaunchpad - Suriname National Winner

This competition is the largest in the world for companies that are active or wish to be in the cleantech sector. It focuses on business ideas that involve clean technologies, innovative and sustainable applications aimed at addressing the impacts of climate change.

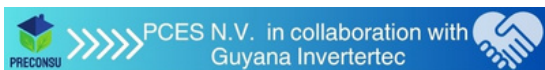


The Entrepreneurship World Cup 2021: 2nd Place

The Entrepreneurship World Cup 2021 was organized by Arthem Consultancy in collaboration with Act Now Foundation. During the EWC, entrepreneurs had the opportunity to present their business pitches. This marks the second time Suriname has participated in this global competition, providing a unique opportunity to showcase the best innovative entrepreneurs in the country.



In collaboration with Keller Williams Suriname



In collaboration with Invertertec

Erkend leerbedrijf

Wij leiden vakmensen op

Op 20 december 2023 heeft PCES N.V. met trots haar erkenning ontvangen van de Samenwerkingsorganisatie Beroepsonderwijs Bedrijfsleven Nederland. SBB is een professionele organisatie in het hart van het middelbaar beroepsonderwijs en het bedrijfsleven. Wij voeren taken uit in opdracht van het ministerie van OCW, zoals het erkennen en begeleiden van leerbedrijven, onder andere voor stages en leerbanen.



Ook ontwikkelen we de kwalificatie structuur en leveren we stage- en arbeidsmarktinformatie. Tot slot is SBB de plek waar beroepsonderwijs en bedrijfsleven afspraken maken over de aansluiting van het onderwijs op de arbeidsmarkt.